



# ASCENSION

*Lutheran Church*

## **Sixth Sunday After Epiphany**

8:30 a.m., Sunday, February 12, 2023

### **Worship Leadership Today**

Rev. Christian Marien, *Lead Pastor*

Rev. Anthony Acompañado, *Associate Pastor*

Edwin Aparicio, *Pastoral Intern*

Vicki Taylor, *Director of Music Ministries*

Grace Paczesny, *acolyte*

Marge Schroeder, *Altar Guild*

Kathy Johnson, *choir accompanist*

Marge and Todd Schroeder, *communion*

Adam Boales, *media*

Bill Klippel, Dennis Mohr, *ushers*

Scot Werner, *usher*

## **PRELUDE**

### **Rejoice, O Pilgrim Throng**

*setting by Michael Burkhardt*

## **WELCOME / ANNOUNCEMENTS**

## **OPENING HYMN**

### **Immortal, Invisible, God Only Wise**

**ELW 834**

## **GREETING**

**P:** The grace of our Lord Jesus Christ, the love of God, and the communion of the Holy Spirit be with you all.

**C:** **And also with you.**

## **KYRIE**

**p. 138**

## **HYMN OF PRAISE**

### **This Is the Feast**

**p. 140**

## **PRAYER OF THE DAY**

**P:** O God, the strength of all who hope in you, because we are weak mortals we accomplish nothing good without you. Help us to see and understand the things we ought to do, and give us grace and power to do them, through Jesus Christ, our Savior and Lord.

**C:** **Amen.**

## **ANTHEM**

### **Instruments of Your Peace**

*Dearman, arr. Mauldin*

**Ascension Choir,  
Children's Choir**

## GOSPEL ACCLAMATION



Al - le - lu - ia. Lord, to whom shall we go? You have the  
words of e - ter - nal life. Al - le - lu - ia. Al - le - lu - ia.

## GOSPEL ANNOUNCEMENT

P: The Holy Gospel according to St. Matthew, the 5th chapter.

C:



Glo - ry to you, O Lord.

## GOSPEL READING

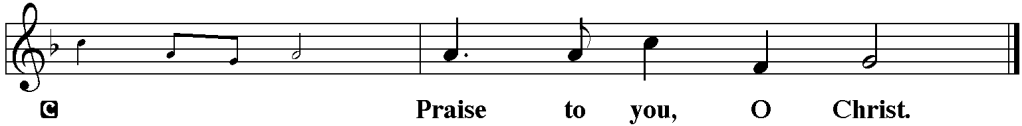
**Matthew 5:21-37**

[Jesus said to the disciples:] “You have heard that it was said to those of ancient times, ‘You shall not murder’; and ‘whoever murders shall be liable to judgment.’ But I say to you that if you are angry with a brother or sister, you will be liable to judgment; and if you insult a brother or sister, you will be liable to the council; and if you say, ‘You fool,’ you will be liable to the hell of fire. So when you are offering your gift at the altar, if you remember that your brother or sister has something against you, leave your gift there before the altar and go; first be reconciled to your brother or sister, and then come and offer your gift. Come to terms quickly with your accuser while you are on the way to court with him, or your accuser may hand you over to the judge, and the judge to the guard, and you will be thrown into prison. Truly I tell you, you will never get out until you have paid the last penny. “You have heard that it was said, ‘You shall not commit adultery.’ But I say to you that everyone who looks at a woman with lust has already committed adultery with her in his heart. If your right eye causes you to sin, tear it out and throw it away; it is better for you to lose one of your members than for your whole body to be thrown into hell. And if your right hand causes you to sin, cut it off and throw it away; it is better for you to lose one of your members than for your whole body to go into hell. “It was also said, ‘Whoever divorces his wife, let him give her a certificate of divorce.’ But I say to you that anyone who divorces his wife, except on the ground of unchastity, causes her to commit adultery; and whoever marries a divorced woman commits adultery. “Again, you have heard that it was said to those of ancient times, ‘You shall not swear falsely, but carry out the vows you have made to the Lord.’ But I say to you, Do not swear at all, either by heaven, for it is the throne of God, or by the earth, for it is his footstool, or by Jerusalem, for it is the city of the great King.

And do not swear by your head, for you cannot make one hair white or black. Let your word be 'Yes, Yes' or 'No, No'; anything more than this comes from the evil one."

P: The Gospel of the Lord.

C:



## SERMON

Pastor Tony

## HYMN

Oh, That the Lord Would Guide My Ways

ELW 772

## APOSTLES' CREED

I believe in God, the Father almighty, creator of heaven and earth.

I believe in Jesus Christ, his only Son, our Lord. He was conceived by the power of the Holy Spirit and born of the virgin Mary. He suffered under Pontius Pilate, was crucified, died, and was buried. He descended into hell. On the third day he rose again. He ascended into heaven, and is seated at the right hand of the Father. He will come again to judge the living and the dead.

I believe in the Holy Spirit, the holy catholic church, the communion of saints, the forgiveness of sins, the resurrection of the body, and the life everlasting. Amen.

## PRAYERS OF THE PEOPLE

**Healing:** Nancy Link, heart cath

**God's Care:** For the people impacted by the earthquakes in Turkey and Syria.

## SHARING OF THE PEACE

## OFFERING

Let All Things Now Living  
*arr. Susan Geschke*

Ascension  
Ringers

	<p><b>To Donate</b></p> <p><i>or online at</i> <a href="http://tinyurl.com/DonateAscension">tinyurl.com/DonateAscension</a></p>
-------------------------------------------------------------------------------------	-------------------------------------------------------------------------------------------------------------------------------------

## OFFERTORY PRAYER

P: Let us pray ... Merciful Father,

C: **We offer with joy and thanksgiving what you have first given us—our selves, our time, and our possessions, signs of your gracious love. Receive them for the sake of him who offered himself for us, Jesus Christ our Lord. Amen.**

## WORDS OF INSTITUTION

### LORD'S PRAYER

**Our Father, who art in Heaven, hallowed be thy name, thy kingdom come, thy will be done on earth as it is in heaven. Give us this day our daily bread, and forgive us our trespasses, as we forgive those who trespass against us. Lead us not into temptation, but deliver us from evil, for thine is the kingdom, the power, and the glory, forever and ever. Amen.**

### DISTRIBUTION OF COMMUNION

All those believing in the saving power of Jesus Christ through the gift of his life, death, and resurrection are welcome to receive communion at this table of grace. We offer both bread and wine for holy communion. Gluten-free wafers and white grape juice are available.

### LAMB OF GOD

p. 146

### HYMNS

**One Bread, One Body**

**ELW 496**

**Come Down, O Love Divine**

**ELW 804**

## COMMUNION BLESSING

### BENEDICTION

P: The Lord bless you and keep you. The Lord's face shine on you and be gracious to you. The Lord look upon you with favor and give you peace. In the name of the Father, and of the Son, ✠ and of the Holy Spirit.

C: **Amen.**

### CLOSING HYMN

**O Christ Our Hope**

**ELW 604**

### SENDING

P: Go in peace. Serve the Lord.

C: **Thanks be to God.**

### POSTLUDE

**Fugue in C Major, Dietrich Buxtehude**



# ASCENSION

**Children Are God's Gift:** We are a noisy church. We are happy to celebrate the sounds of children during worship. You are welcome to step into the lobby with your child for a break if needed. A changing table is in the women's bathroom in the lobby.

**Pew Pads:** Please fill-out the blue pew pad and pass it to your neighbor. You might make a new friend.

**Love Your Church, Love Your World:** In the month of February, Ascension celebrates *Love Your Church/Love Your World*. We invite you to choose a heart from the windows of the narthex/lobby to purchase items or defray the cost of items already purchased. See the complete request list online, <https://ascensionelca.org/love-your-church-love-your-world/>.

**Starting Point for Membership:** Interested in joining Ascension? We'll hold two informal sessions for people to get to know more about our church, on March 5 and March 19, between services. RSVP online <http://tinyurl.com/AscensionNewMembers>, or by phone or email (262-547-8518, [admin@ascensionelca.org](mailto:admin@ascensionelca.org)), to let us know you're interested.

**JOLT & CRASH:** JOLT meets on Thursdays, Feb. 9 & 23, at 6 p.m., and on Ash Wednesday, Feb. 22, at 6 p.m. for dinner preceding worship at 6:30 p.m. CRASH next meets on Feb. 26 at 6 p.m.

**Young at Heart (55+):** Join us Wednesday, Feb. 15, for potluck lunch, games and fellowship. Bring a dish to pass if you're able.

**Bunco!** A group is forming to play Bunco at Ascension. Play begins Wednesday, March 22, at 1 p.m. Please contact Arlene Davis, 262-542-9119, or Beth Hoffmann, 262-542-7447, if interested.

**GriefShare:** If you or a loved one have suffered loss and would like some help and support, this may be the program for you. This group will provide help and encouragement after the death of a spouse, child, family member or friend. Led by Pastor Tony, the program will be held on Tuesdays beginning on Tuesday, March 28, from 6-8 p.m. in the Conference Room. Please sign-up online <https://tinyurl.com/GriefAscension> or by call to the church office, 262-547-8518.

**ELCA Lutheran Disaster Relief:** Following the devastating earthquakes that impacted Turkey and Syria, the ELCA's Lutheran Disaster Response is committed to supporting partner organizations that are responding to the needs of survivors. Support the response today by donating to the ELCA Lutheran Disaster Relief online at <https://www.elca.org/>.

## To Donate

*Or use the Vanco  
Giving app or  
online at  
[tinyurl.com/  
DonateAscension](http://tinyurl.com/DonateAscension)*



*More announcements next page*

## ANNOUNCEMENTS *cont.*

**Tutoring:** If you have been interested in our English/tutoring program but cannot commit to weekly attendance, we could use you as a substitute when a tutor needs a day off. We will give you guidance and support in how best to work with the students. Contact Shirley Wehmeier, [shwehmeier@gmail.com](mailto:shwehmeier@gmail.com), if you are able to help.

**Winter Farmers' Market:** Save March 12 for the Winter Farmers' Market. This is a great opportunity to invite a friend to Ascension. Who can you invite to the market and experience our welcoming atmosphere? Tickets for the brunch, featuring great new recipes, will be available starting next week. See Ascension's Mission Outreach Facebook page, <https://www.facebook.com/Ascension.ELCA.MO>, for details of ticket prices.

**Blessing Box:** Please watch the weather when making donations to the Blessing Box. If the weather is too cold, cans may explode and other products may freeze. There is a decrease in use during extreme weather so we cut back on what we put in the box. As the weather warms up, we see an increase in use and welcome new donations.

**Offering Envelopes & Pledging:** 2023 Offering Envelopes are delayed due to printer problems. In the meantime, if you give cash, use an envelope from the pew and put your name on it. If you donate by check, we'll pull the donor information from the check. You can also donate online at <http://tinyurl.com/DonateAscension> or with the QR code.

**Worship Help:** We're always looking for volunteers to help during worship. If you want to get more involved at Ascension, please contact the church office. See the schedule online, <https://tinyurl.com/worshipsupport>.

<b>Upcoming Worship Support Schedule</b>		
<i>See the complete schedule online <a href="https://tinyurl.com/worshipsupport">https://tinyurl.com/worshipsupport</a></i>		
<b>Feb. 19</b>	<b>8:30 a.m.</b>	<b>10:45 a.m.</b>
<b>Acolytes</b>	Shelby Leatherwood	Mira Schaefer
<b>Altar Guild</b>	Joan Birner	Jay and Robin Gallo
<b>Communion</b>	Scot Werner, Al Wollschlager	Becky Hastings, Kathy Riutta
<b>Media</b>	Brian Novotny	Andrew Marien
<b>Ushers</b>	Bill Klippel, Dennis Mohr, Jeff Rohrer	Mike Rapp

# CALENDAR

Calendar online <https://ascensionelca.org/events/>.

**Sun Feb 12**  
**8:30am Worship S**  
 9:50am BLAST  
**10:45am Adoración EH**  
**10:45am Worship S**  
 7pm AA WH

**Mon Feb 13**  
 10am Book Study HR  
 1pm Knit Wits HR  
 6:30pm Book Study HR  
 6:30pm AA Sm Group  
 WH

**Tue Feb 14**  
*7am AMEN Z*  
 9:30am Women's Bible  
 CR  
 7pm Holloway Group HR

**Wed Feb 15**  
 12pm Young at Heart  
 WH  
 5pm Children's Choir  
 6pm Handbells S  
 7pm AA WH  
 7:30pm Choir S

**Thu Feb 16**  
 9:30am TGIT HR  
 10am Al Anon CR

**Fri Feb 17**  
 1pm Hansen Group HR

**Sat Feb 18**  
 9am Tutoring  
 12:15pm Knit Fest HR

**Sun Feb 19**  
**8:30am Worship S**  
 9:50am BLAST  
**10:45am Adoración EH**  
**10:45am Worship S**  
 7pm AA WH

**Mon Feb 20**  
 10am Book Study HR  
 6:30pm Book Study HR  
 6:30pm AA Sm Group  
 WH

**Tue Feb 21**  
*7am AMEN zoom*  
 9:30am Women's Bible  
 CR  
 6pm Handbells S  
 7pm Church council HR  
 7:30pm Choir S

**Wed Feb 22**  
**Ash Wednesday**  
**12pm Worship S**  
 6pm JOLT dinner WH  
**6:30pm Worship S**  
 7pm AA WH

**Thu Feb 23**  
 10am Al Anon CR  
 5pm Children's Choir  
 6pm JOLT

**Sat Feb 25**  
*Chosen Gala*  
 9am Tutoring

<u>Key</u>	
CR	Conference rm
EH	East Hall
HR	Hearth rm
MG	Memorial Gardens
S	Sanctuary
WH	West Hall
<i>Italics Virtual or offsite</i>	

## Are You Visiting?

Date of Visit: \_\_\_\_\_

Time of Worship: \_\_\_\_\_

Names: \_\_\_\_\_

Address: \_\_\_\_\_

Phone: \_\_\_\_\_

Email: \_\_\_\_\_

***How did God invite you here?***

***How can we share the life of Ascension with you?***

- Newsletter: e-mail or U.S. Mail
- BLAST (ages 3-5th gr.)
- JOLT (confirmation, 6-8th gr.)
- CRASH (high school)
- Bible study (small groups)
- Choirs or other music ministries
- Serving others (local/global options)
- Starting Point class (membership)

**Please place in the offering plate.**



**ASCENSION**

*Lutheran Church*

1415 Dopp St., Waukesha, WI 53188  
262-547-8518 [ascensionelca.org](http://ascensionelca.org)